



TerraChula APARTMENTS

Looking for a new investment opportunity
with great potential?





OPPORTUNITY

Do you dream of a place where you will feel like in paradise? Are you looking for a new investment opportunity with great potential?

You should consider investing in the Terra Chula resort development, which now offers pre-sales of luxury apartments, making it an ideal destination for those looking for a retreat or investment opportunity.

This newly developed resort is located on one of the most beautiful and popular islands Honduras called Roatán.



LOCATION

Roatán lies in the western Caribbean Sea and is characterised by its pristine white sand beaches, clear turquoise waters and lush tropical jungle.

It is known for its laid-back island lifestyle and friendly local population.

There is something for everyone on the island - from world-class diving and snorkelling to relaxing on the diverse beaches, swimming with dolphins or taking a jungle cable ride.

With spectacular scenery and direct flights from major American cities like Miami and Houston, getting to the Roatán is easier than ever before, making Roatán the perfect place to invest in a second home or a vacation rental.

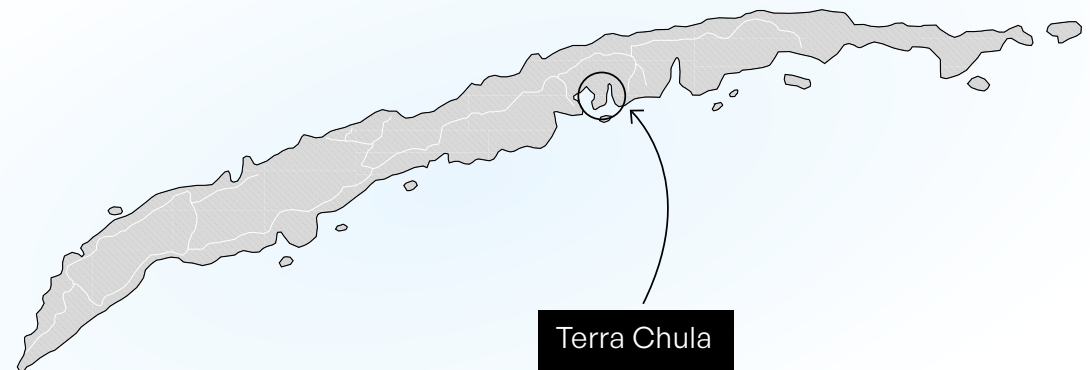
The pre-sale of apartments at the newly built Terra Chula resort provides investors an opportunity to buy a piece of paradise before the resort opens its doors to the public.



ROATAN

The Terra Chula resort is situated in the centre of the island on the south coast directly in the very quiet settlement of Jonesville Point with good access to the west and east of the island. This exclusive island community offers apartments for sale that are the perfect combination of luxury and comfort.

The resort will have its own community pool, bar and restaurant, private pier in a gated marine lagoon from which to sail to beautiful locations for swimming, snorkelling, diving and fishing.





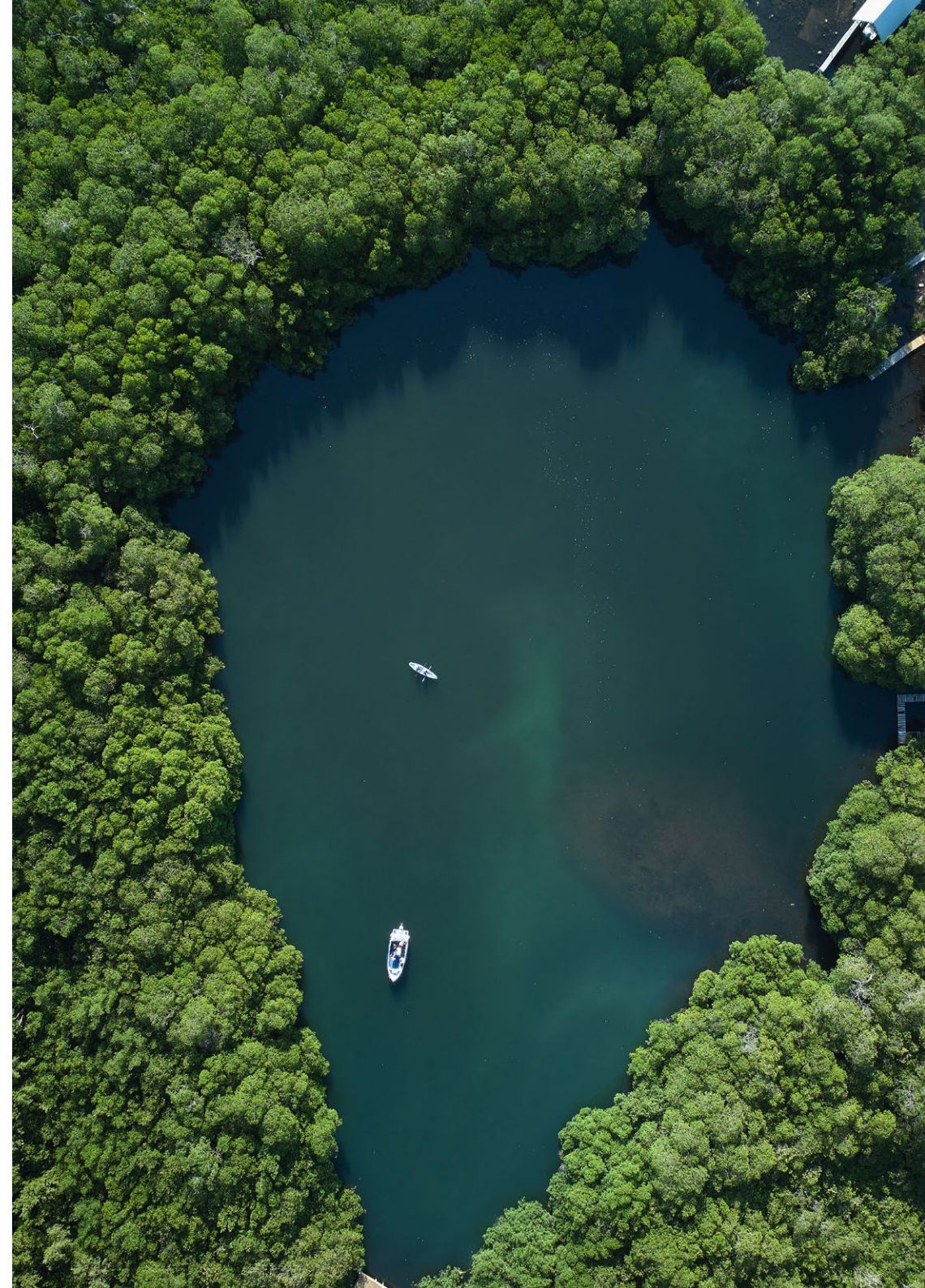
RESORT

The resort's location and verdant gardens with breathtaking views of the Caribbean Sea are a big part of that, of what makes us so special.

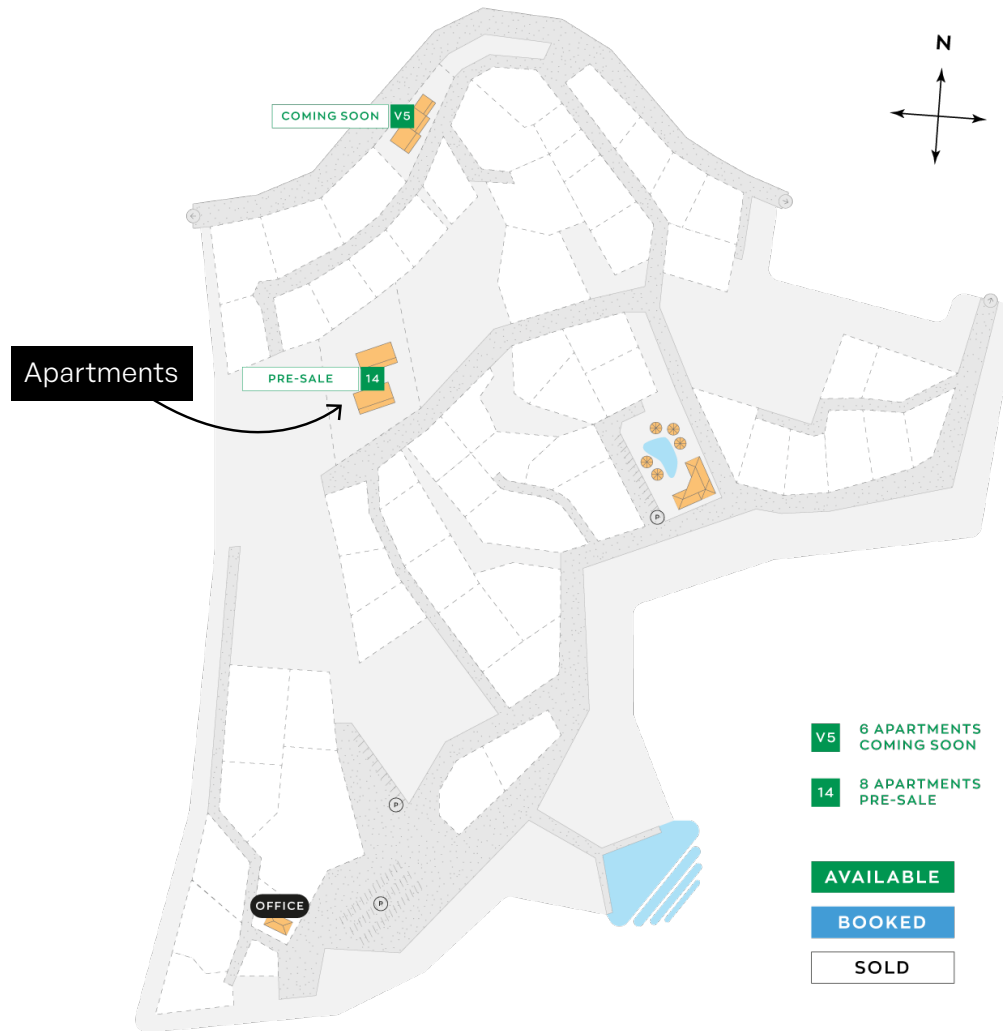
The apartments are right in the heart of Terra Chula Resort, bringing you many benefits in the form of convenience, amenities, entertainment and above all, security, that comes with knowing you're living in a safe community.

RESORT EQUIPMENT

- ◆ Quiet natural environment
- ◆ Round-the-clock security
- ◆ Community well,
- ◆ Water, electricity and fiber optic internet lines available on every plot
- ◆ Community pool and space for social gatherings
- ◆ Restaurant with bar
- ◆ Own private pier with boat mooring
- ◆ Panoramic views of the Caribbean Sea
- ◆ Low monthly HOA fees
- ◆ Rental management provided by the developer



RESORT



AREA	m ² / ft ²	PRICE
14 - A01L	98,64 / 1061,75	290 000 \$
14 - A01P	98,64 / 1061,75	290 000 \$
14 - A02L	102,25 / 1100,61	290 000 \$
14 - A02P	102,25 / 1100,61	290 000 \$
14 - B01L	98,64 / 1061,75	290 000 \$
14 - B01P	98,64 / 1061,75	290 000 \$
14 - B02L	102,25 / 1100,61	290 000 \$
14 - B02P	102,25 / 1100,61	290 000 \$

+ HOA 1 320 \$ / year

+ The additional cost of the contract is 6% of the purchase price.

APARTMENTS

An aerial photograph of a tropical coastal area. The foreground and middle ground are dominated by lush green hills covered in dense vegetation. Several houses with various roof colors (blue, red, white) are scattered across the slopes. A large body of water, possibly a bay or lagoon, occupies the right side of the image. In the distance, a marina is visible with numerous boats docked. The sky is clear and bright, suggesting a sunny day. The overall scene is peaceful and scenic.

The building offers 8 apartments for pre-sale. There are 2 bedrooms in the apartment, 1 bathroom, a living area with kitchenette and a terrace with panoramic sea views. The apartment includes a garage parking space.









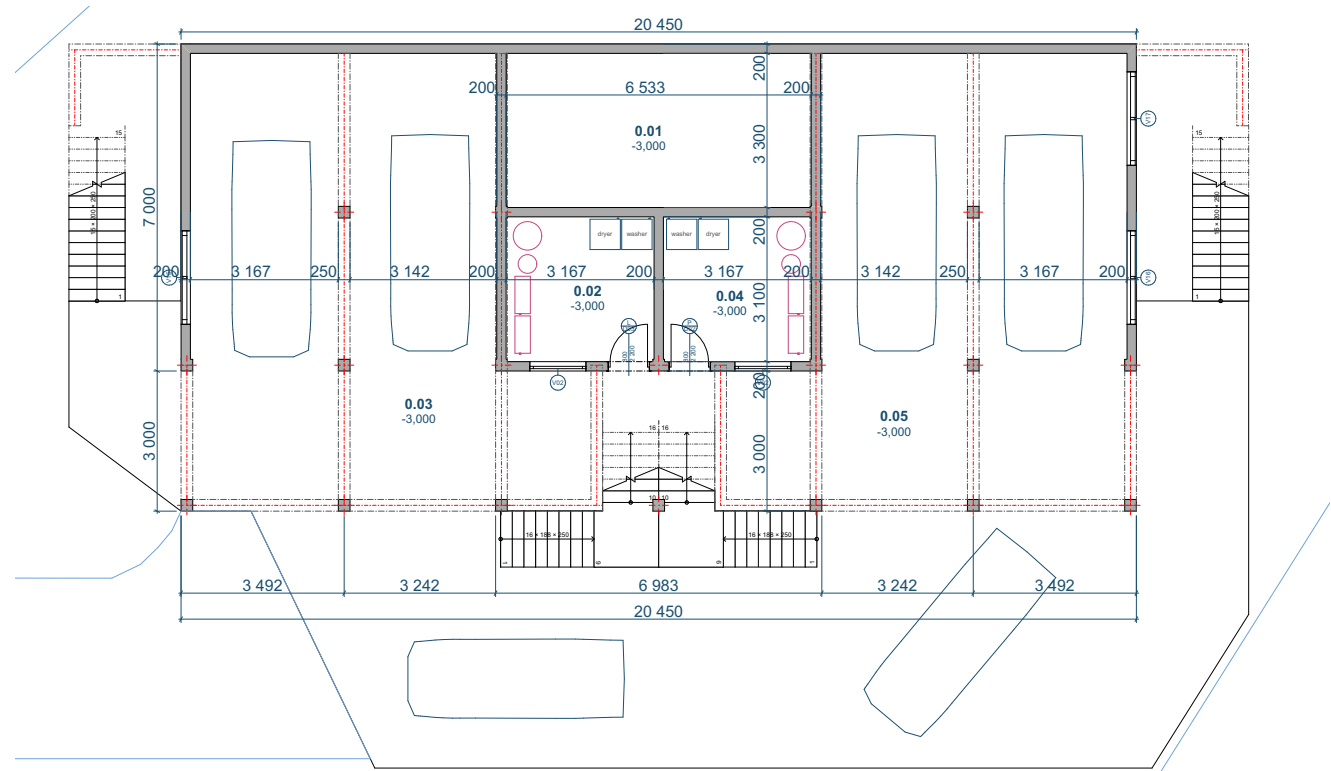


FLOOR PLAN

0. ground floor

Terra Chula – apartments 14

internal area:	143,15	m ²
outdoor area:	61,35	m ²
total area:	204,50	m ²
entrance and exit area:	204,50	m ²



LEGEND OF ROOMS

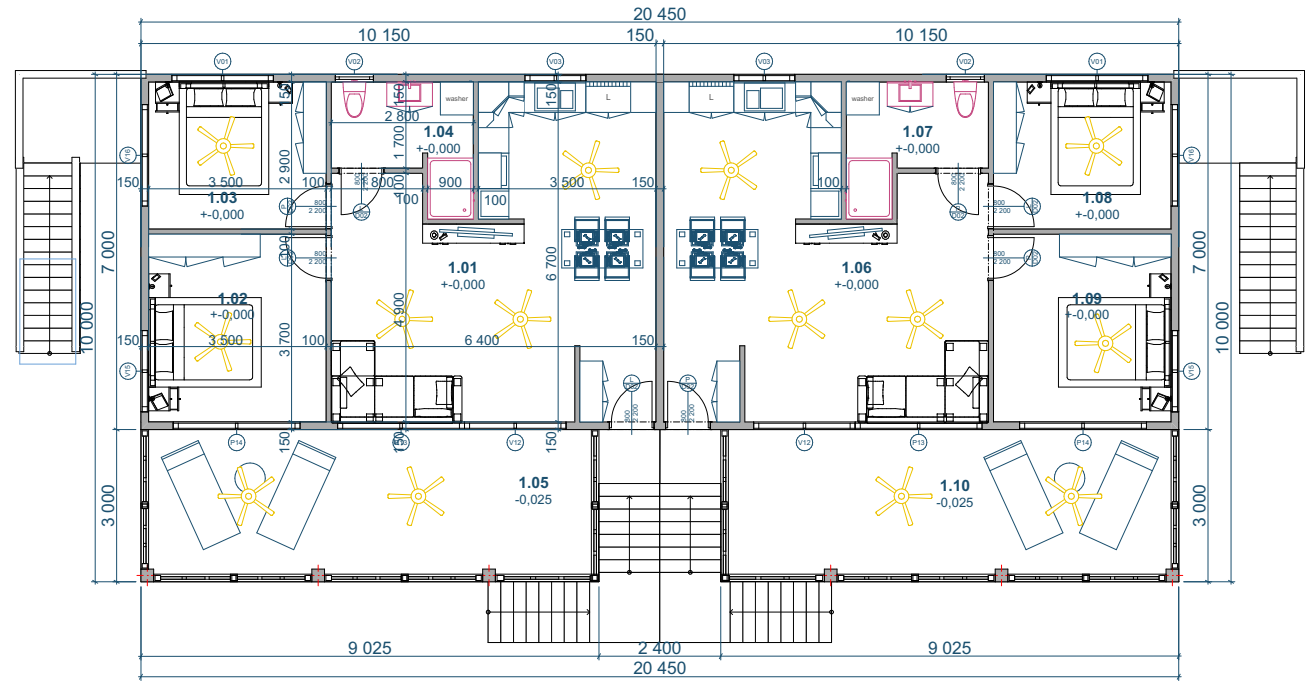
Nº	common use	area	
0.01	watertank	228.5	ft ²
0.02	tech.r. ap1+3	99.8	ft ²
0.03	garage ap1+3	764.2	ft ²
0.04	tech.r. ap2+3	105.7	ft ²
0.05	garage ap2+4	764.2	ft ²
TOTAL		904.3	ft²

FLOOR PLAN

1. above ground floor

Terra Chula – apartmány 14

internal area:	143,15	m ²
outdoor area:	61,35	m ²
total area:	204,50	m ²
entrance and exit area:	204,50	m ²



LEGEND OF ROOMS

APARTMENT N.1

N ^o	use	area	
1.01	living room+kitchen	394.3	ft ²
1.02	bedroom 1	139.3	ft ²
1.03	bedroom 2	109.2	ft ²
1.04	bathroom	60.9	ft ²
1.05	terrace	291.3	ft ²
TOTAL		1061.7	ft²

APARTMENT N.2

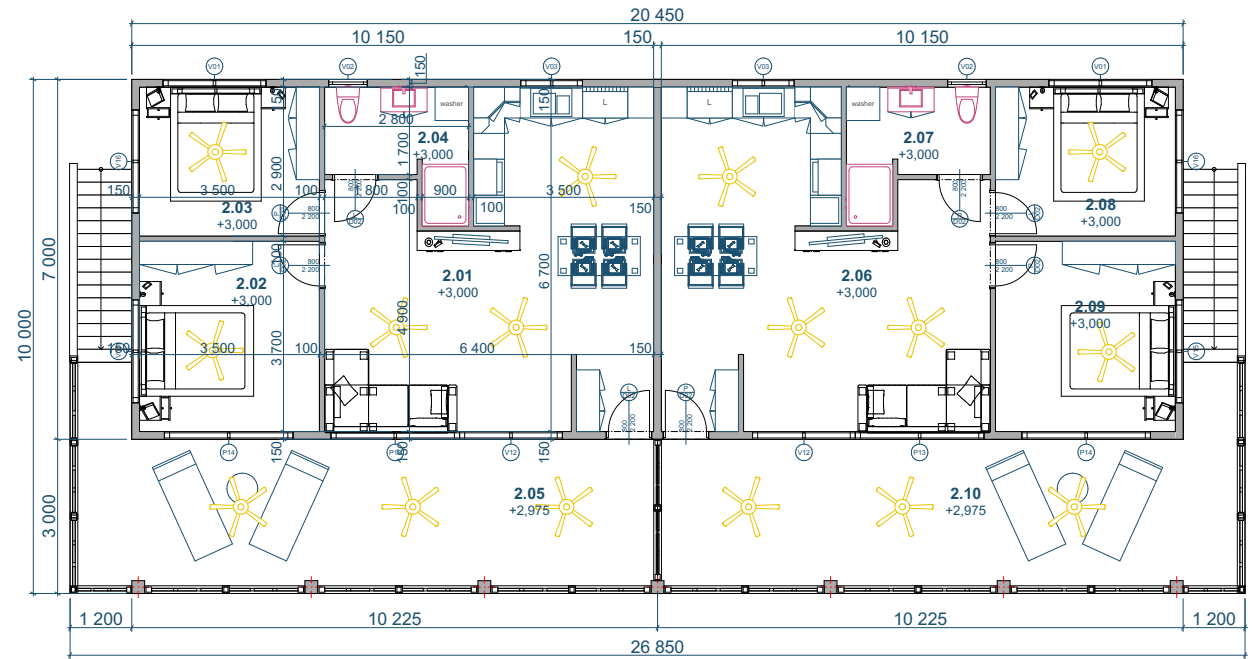
N ^o	use	area	
1.06	living room+kitchen	394.3	ft ²
1.07	bathroom	60.9	ft ²
1.08	bedroom 1	109.2	ft ²
1.09	bedroom 2	139.3	ft ²
1.10	terrace	291.3	ft ²
TOTAL		1061.7	ft²

PŮDORYS

2. above ground floor

Terra Chula – apartmány 14

internal area:	1540	ft ²
outdoor area:	660	ft ²
total area:	2201	ft ²
entrance and exit area:	2201	ft ²



LEGEND OF ROOMS

APARTMENT N.1

N ^o	use	area	
2.01	living room+kitchen	394.3	ft ²
2.02	bedroom 1	139.3	ft ²
2.03	bedroom 2	109.2	ft ²
2.04	bathroom	60.9	ft ²
2.05	terrace	330.1	ft ²
TOTAL		1100.6	ft²

APARTMENT N.2

N ^o	use	area	
2.06	living room+kitchen	394.3	ft ²
2.07	bathroom	60.9	ft ²
2.08	bedroom 1	109.2	ft ²
2.09	bedroom 2	139.3	ft ²
2.10	terrace	330.1	ft ²
TOTAL		1100.6	ft²

INTERIORS

Terra Chula pre-sale apartments offer potential investors a unique opportunity to own a brand new, never-before-occupied unit.

Interiors are designed with comfort and convenience in mind to make the most of every square inch, and their unique layout will breathe life into your dream space and give you a sense of home.

living room + kitchen



living room + kitchen



1. bedroom



2. bedroom



toilet + bathroom



CENA

Total price per apartment:
290.000 \$
HOA 1 320 \$ / year

The price includes water connections
(price \$6/m3), electricity and fiber optic internet.

Estimated construction date is planned
2024/2025.

The additional cost of the contract
is 6% of the purchase price.



KONTAKT

Bc. DAVID DVOŘÁK BA (Hons)

Project Coordinator

Tel.: +420 722 097 276

E-mail: info@terrachula.com

TERRA CHULA HOLDINGS S.A.,

RTN:11019017936897

Jonesville Point Rd.,

Jose Santos Guardiola, Roatan, Bay Island

341 01, Honduras C.A.

MONASTA CZ, s.r.o.

Vážany 64, 680 01, Vážany

Czech Republic

IČ: 08150001

DIČ: CZ08150001

